

R82 Cricket - E1236

USD Retail Price List/ Order Form



Account #: _____ Purchase Order No.: _____ Date: _____
 Contact: _____ Mark For: _____

Bill To:	Ship To:
Address:	Address:
City/State/Zip:	
Phone:	City/State/Zip:
Email	Phone:

US Configuration

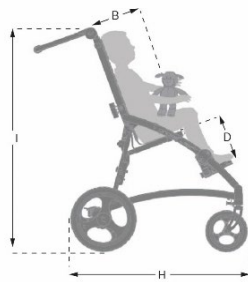
Effective: 05.08.19 - Rev 4

- Cricket
- Cushion
- Arm rests
- Head support
- Tray
- Grip bar
- Folding top
- Transport fittings



- A** (Back Height) _____
- B** (Arm Height) _____
- C** (Lower Leg Length) _____
- D** (Seat Depth) _____
- E** (Chest Width) _____
- F** (Seat Width) _____
- G** (Height from Seat to Top of Head) _____
- H** (Shoulder Width) _____
- Age _____
- Weight _____

Measurements



	Size 1 Inches	Size 2 Inches
Effective seat width (A)	13½"	15½"
Effective seat depth (B)	8½-12¼"	12¼-17"
Backrest height (C1)	19¾"	22½"
Seat surface height at front edge (E)	19¾-21"	21¼-22¼"
Footrest to seat distance (D)	7-14¼"	8¾-14½"
Leg to seat surface angle	360°	360°
Backrest width, outside (F1)	13½"	15½"
Backrest width, inside (F)	10¾"	13"
Overall width (G)	20¾"	22¾"
Length (H)	29½"	29½"
Overall height (I)	39¼"	41¼"
Folded width	14"	14"
Folded height	19"	19"
Folding length	30"	30"
Backrest angle	110°-125°	110°-125°
Minimum turning radius	27½"	30"
Total mass	27.3 lbs.	29½ lbs.
Max load	77 lbs.	110 lbs.
Max load at transportation	59½ lbs.	94½ lbs.
Required width of right angled corridor	32"	32"
Static stability (sideways, downhill, uphill)	10°	10°

Notes:

Cricket Standard Features



- Back Recline
- Adjustable Seat Depth
- Height and Angle Adjustable Foot Support
- Armrest, Fixed (Pr.)
- Angle Adjustable Pushbrace
- Foot Operated Wheel Lock
- Castors - 7" Front 11" Rear Solid

Description	Part No.	USD Price	HCPCS
<input type="checkbox"/> Cricket sz 1	87043100	\$1,911	E1236
<input type="checkbox"/> Cricket sz 2	87043200	\$1,911	E1236

Description	Size	Part No.	USD Price	HCPCS
-------------	------	----------	-----------	-------

Required, must select a color

- Blue = 1 Red = 2
- Pink = 5 Grey = 4



<input type="checkbox"/> Cushion	1	8704311x	\$0
<input type="checkbox"/> Cushion	2	8704321x	\$0

◆ Colors Green, Orange & Yellow available as a custom order; Approx. lead time: 6-8 weeks. Non-returnable item

<input type="checkbox"/> Seat Side Parts ◆	One Size	87043130	\$52
--	----------	----------	------

◆ Required with Seat Width Reduction Kit

Description	Measurements	Size	Part No.	USD Price	HCPCS
-------------	--------------	------	----------	-----------	-------



<input type="checkbox"/> Transit Option		One Size	87043188	\$200
---	--	----------	----------	-------

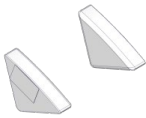
Description	Measurements	Size	Part No.	USD Price	HCPCS
-------------	--------------	------	----------	-----------	-------



<input type="checkbox"/> Armrest, Fixed (Pr.) ◆		1	87043120-1	\$0
<input type="checkbox"/> Armrest, Fixed (Pr.) ◆		2	87043120-2	\$0

◆ Required with Grip Bar, In Armrests

Description	Measurements	Size	Part No.	USD Price	HCPCS
-------------	--------------	------	----------	-----------	-------

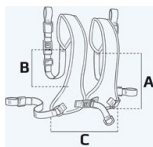


<input type="checkbox"/> Seat Width Reduction Kit, Wedges (Pr.) ◆			87043130-1	\$72	K0108
<input type="checkbox"/> Seat Width Reduction Kit, Wedges (Pr.) ◆			87043130-2	\$72	K0108

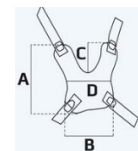
◆ Requires Seat Side Parts (87043130)



<input type="checkbox"/> Wedges for Shaping Back (Pr.)	4½" x 6" x 11"	Type 1	87043140-1	\$72	K0108
<input type="checkbox"/> Wedges for Shaping Back (Pr.)	5¾" x 6" x 11"	Type 2	87043140-2	\$72	K0108

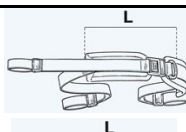


<input type="checkbox"/> Chest Belt, Upholstery (Ea.)	A:11¼ x B:7½ x C:9¼-12"	1	85428-1	\$270	E0960
<input type="checkbox"/> Chest Belt, Upholstery (Ea.)	A:14 x B:10 x C:10-12¾"	2	85428-2	\$270	E0960

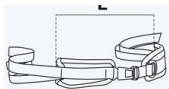


<input type="checkbox"/> Neoprene Vest (Ea.)	A:7 x B:5½ x C:4 x D:4½"	1	89113-1	\$200	E0960
<input type="checkbox"/> Neoprene Vest (Ea.)	A:10½ x B:11 x C:6½ x D:5¾"	2	89113-2	\$200	E0960

Accessories	Description	Measurements	Size	Part No.	USD Price	HCPCS
-------------	-------------	--------------	------	----------	-----------	-------



<input type="checkbox"/> 2-Point Pelvic Belt, Black	L: 13-14½"	1	85424-1	\$97	E0978
---	------------	---	---------	------	-------

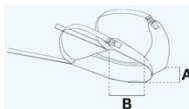


- 4-Point Padded Hip Belt L: 10¼-11½" 1 85427-1 \$135 E0978
- 4-Point Padded Hip Belt L: 12½-13½" 2 85427-2 \$135 E0978



- Fix-Locks, Black, Bag of 6 Pcs ♦ One Size 862109-35 \$42
- ♦ **Required for use of Vests**

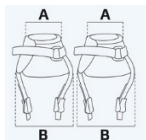
Description	Measurements	Size	Part No.	USD Price	HCPCS
-------------	--------------	------	----------	-----------	-------



- Pelvic Harness A: 6½ x B: 7½" 0 89108-0 \$245 E0978
- Pelvic Harness A: 8½ x B: 8¾" 1 89108-1 \$245 E0978
- Pelvic Harness A: 10½ x B: 9¾" 2 89108-2 \$245 E0978



- Heel Straps (Pr.) One Size 87043185 \$54 E0951



- Upholstered Ankle Straps A: 5½-7 x B: 8½-10" 1 85426-1 \$185 K0108
- Upholstered Ankle Straps A: 6¼-7¾ x B: 10-11¾" 2 85426-2 \$185 K0108

Other types of vests and belts available, please see Vest and Belts Order Form

Description	Measurements	Size	Part No.	USD Price	HCPCS
-------------	--------------	------	----------	-----------	-------



- Headrest Cushion, Black (Ea.) One Size 87043150 \$200 E0955



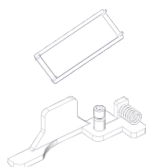
- Sculpted Headrest Cushion, Black (Ea.) One Size 87043151 \$205 E0955



- Backrest Height Extension (Ea.) 1 87043160-1 \$55 K0108
- Backrest Height Extension (Ea.) 2 87043160-2 \$55 K0108

Description	Measurements	Size	Part No.	USD Price	HCPCS
-------------	--------------	------	----------	-----------	-------

- Calf Support Strap (Ea.) 1 87043190-1 \$61 E0995
- Calf Support Strap (Ea.) 2 87043190-2 \$61 E0995



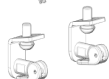
- Additional Footplate Locking Mechanism (Ea.) One Size 87043186 \$30



- Grip Bar, In Armrests ♦ 1 87043181-1 \$172
 - Grip Bar, In Armrests ♦ 2 87043181-2 \$172
- ♦ **Requires Armrest**



- Grip Bar, In Frame 1 87043182-1 \$172
- Grip Bar, In Frame 2 87043182-2 \$172



- Caster Locks One Size 87043187 \$94 K0073

Accessories	Description	Measurements	Size	Part No.	USD Price	HCPCS
-------------	-------------	--------------	------	----------	-----------	-------



Required, must select a color
x = Color

- Blue = 1 Red = 2
- Pink = 5 Grey = 4

- Folding Top (Canopy) (Ea.) ♦ 1 8704317x \$228
 - Folding Top (Canopy) (Ea.) ♦ 2 8704327x \$228
- ♦ **Required w/ Rain Cover**



- Underseat Storage Basket ♦
 - Underseat Storage Basket ♦
- ♦22 lbs. weight limit

1	87043184-1	\$70
2	87043184-2	\$70



- Tray ♦
 - Tray ♦
- ♦Must select same size as armrest

1	87043180-1	\$338	E0950
2	87043180-2	\$338	E0950



- Storage Strap

One Size	85100	\$30
----------	-------	------



- Rain Cape with Hood, Clear A:11 x B:29½"
- Rain Cape with Hood, Clear A:11½ x B:34½"

4	87465-410	\$140
5	87465-510	\$140

- Rain Cover, Clear (Ea.) ♦
 - Rain Cover, Clear (Ea.) ♦
- ♦Requires Folding Top (Canopy)

2	87467-210	\$115
3	87467-310	\$115

HCPCS codes are provided for your convenience and are NOT to be considered billing or legal advice. Providers are responsible for insuring that all appropriate billing codes are used when submitting claims. Proper use of HCPCS codes does not insure coverage or payment. Contact the appropriate payer for coverage information.

The Cricket complies with ISO7176-19, for safe transportation in motor vehicles. The R82 Cricket was tested with the Cricket back rest height extension and Y-hip belt and R82 transit anchors. The performance and safety of accessories and/or other seating options not tested by R82 is unknown, and no warranty or claim about their performance is or can be made.

When being transported in a vehicle, it is R82's position that the wheelchair user transfer from the wheelchair into appropriate vehicle seating during transportation. Please note that at this time, the Department of Transportation has not officially approved any tie-down system for a user while in a wheelchair; therefore R82 cannot recommend a transit system.

For shipping rates, please call 1-844-876-6245

12801 E Independence Blvd, Matthews, NC 28105 • 1-844-876-6245 • Web: www.r82.com

Prices in USD & is subject to change without notice

For Quotes and Orders please send completed Order Form to: us.info@r82.com