

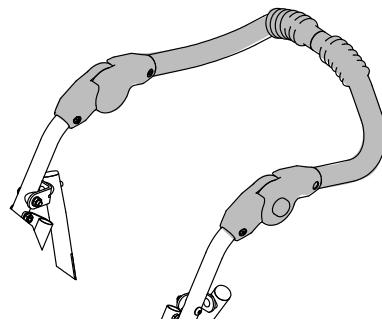
FRAME

One Piece Height Adjustable Push Handle

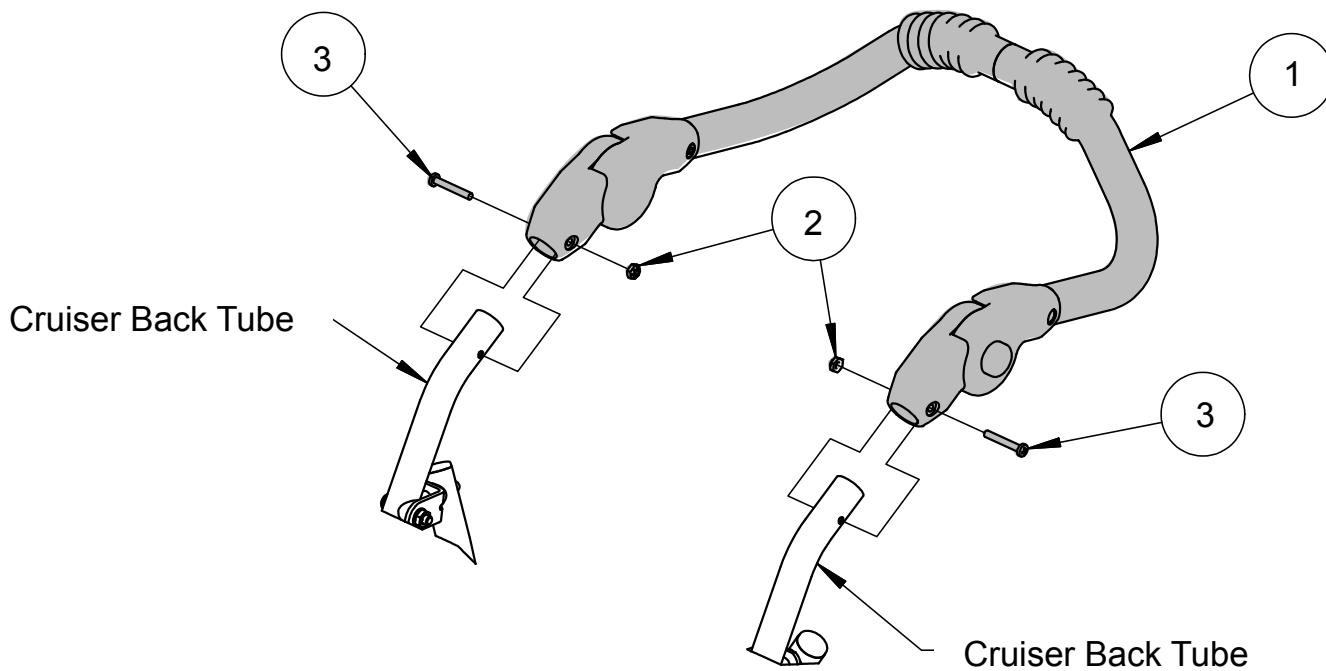
990288

Kit Includes

Item	Description	Qty
1	CX14 Single Pc Handle Assembly	1
2	Locknut #10-24 Jam Flexlock	2
3	Screw #10-24 x 1-1/4" Phil Pan	2



Assembled



If you have any questions about attaching the One Piece Handle, please call our Sales Department at 888 CONVAID (266-8243) or +1 310 618-0111.

 **Convaid**
Now You're Going Places

INSTRUCTIONS

One Piece Height Adjustable Push Handle

1. Using a phillips screwdriver and a 3/8" wrench, remove the screw attaching the handle tube assembly from the Cruiser Back Tubes.
2. Slide existing handle assembly off.
3. Slide new handle assembly onto the back tube. **Item 1**
4. Align the holes on the plastic pivot joint of the handle tube assembly with the holes of the back tubes.
5. Insert new screw **Item 3** into pivot joint.
6. Attach the nut **Item 2** and tighten using a phillips screwdriver and a 3/8" wrench.